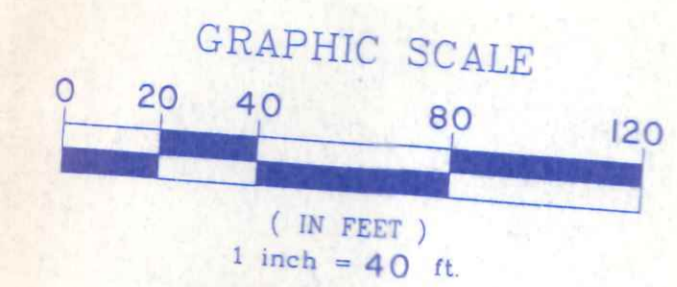


PRELIMINARY PLAT MWT SUBDIVISION



TOTAL CURVE DATA
 DELTA = 05°07'22"
 CHORD BEARING = N48°23'11" E
 CHORD DISTANCE = 496.92'
 RADIUS = 5559.58'
 ARC = 497.08'

POGGEMEYER DESIGN GROUP, INC.
 ARCHITECTS ENGINEERS PLANNERS
 417 WAYNE AVENUE P.O. BOX 7040
 DEFIANCE, OHIO 43512

MWT SUBDIVISION
 NAPOLEON, OHIO

A-1
 $.806 \text{ AC.} \times .4 = .3224$
 $.18 \text{ AC.} \times .9 = .162$

 $.986 \quad .4844$
 $C_w = \frac{.4844}{.986} = .49$

A-2
 $.11 \text{ AC.} \times .4 = .044$
 $.06 \text{ AC.} \times .9 = .054$

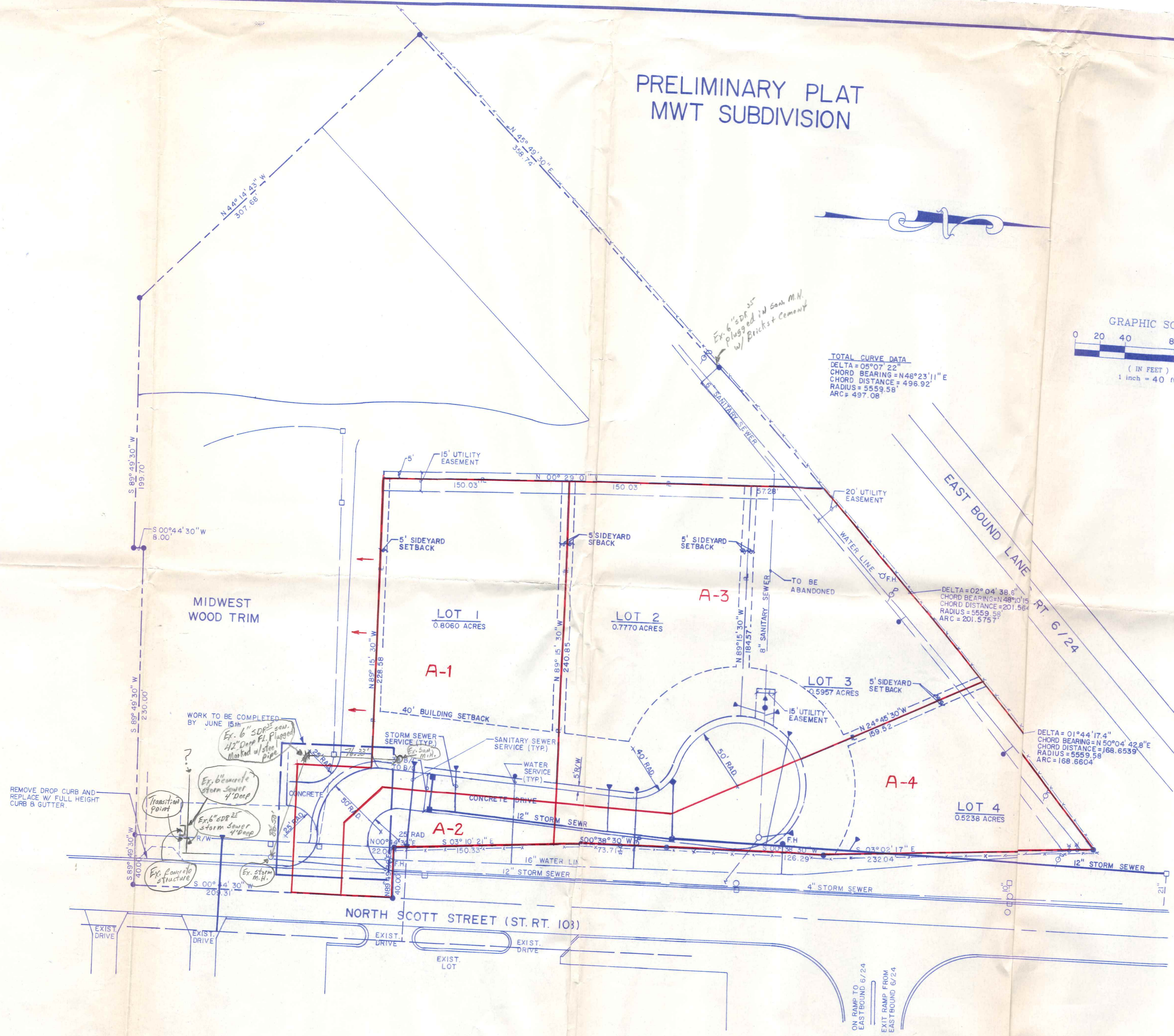
 $.17 \quad .098$
 $C_w = \frac{.098}{.17} = .58$

A-3
 $1.37 \text{ AC.} \times .4 = .548$
 $.27 \text{ AC.} \times .9 = .243$

 $1.64 \quad .791$
 $C_w = \frac{.791}{1.64} = .48$

A-4
 $.5238 \text{ AC.} \times .4 = .209$
 $.21 \text{ AC.} \times .9 = .189$

 $.734 \quad .398$
 $C_w = \frac{.398}{.734} = .54$



ANY INFORMATION ON THIS DRAWING IS NOT INTENDED TO BE SUITABLE FOR REUSE BY ANY PERSON, FIRM OR CORPORATION ANY OTHERS ON EXTENSIONS OF THIS PROJECT OR FOR ANY USE OR ON ANY OTHER PROJECT. ANY REUSE WITHWRITTEN VERIFICATION AND ADAPTATION BY THE ENGINEER, ARCHITECT OR SURVEYOR FOR THE SPECIFIC PURPOSES WILL BE AT THE USERS SOLE RISK AND WITHOUT LIABILITY OR LEGAL EXPOSURE TO THE ENGINEER, ARCHITECT OR SURVEYOR.

DRAWN BY	MEK	DATE	1/7/95
CHECKED BY	KAM		
REVISION			

1/4
 JOB NUMBER
 7171000

PRELIMINARY PLAT

2296
 Scotty